



## Features



- 15-pin D-sub analog RGB 0.7Vp-p / 75 Ohm signal input
- On Screen Display (OSD) adjustments
- Multi language support
- Low power consumption
- Small form factor
- EMI class B compliance

## Introduction

The ADB-200 series driving boards are designed for LCD monitor and other flat panel display applications. The product covered herein are designed and manufactured for following application areas.

- Office electronics
- Instrumentation and measuring equipment
- Machine tools
- Home appliances

## Specifications

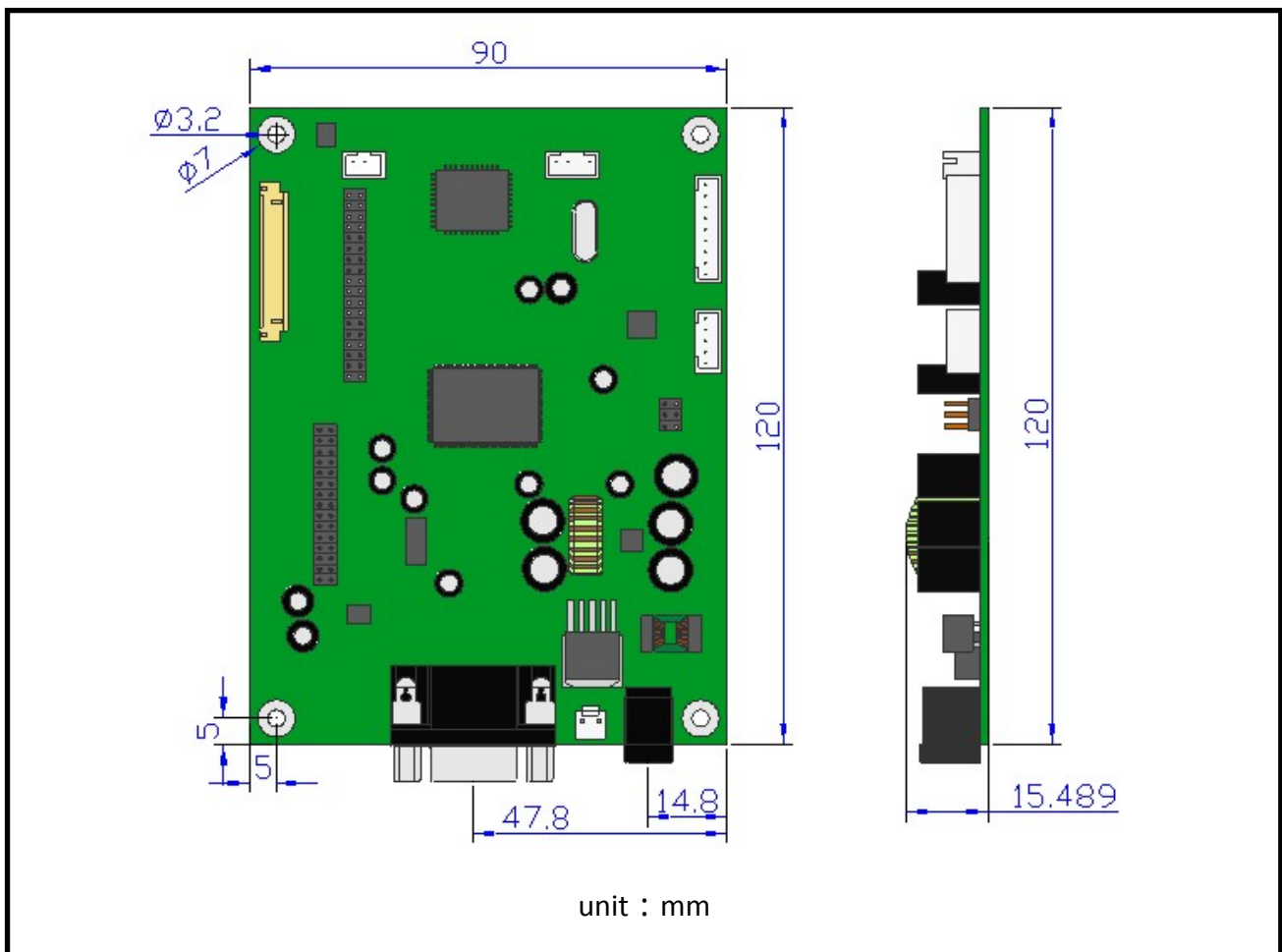
<b>Model Name</b>	<b>ADB-200</b>
<b>PC Input</b>	Analog RGB 0.7Vp-p / 75Ω
<b>Input Option</b>	VGA
<b>Interface</b>	TTL / LVDS
<b>Panel Power</b>	3.3V, 5V, 12V
<b>Resolution</b>	Up to 1280 x 1024@75Hz
<b>Power Input</b>	DC12V
<b>User Controls (OSD)</b>	Auto Adjust, Brightness, Contrast, Size, Position, 7 Languages, OSD Position
<b>Power Saving Mode</b>	0.05A (Inactive)
<b>Power Protection</b>	Fuse fitted





Power Consumption (Typ.)	0.62A (6.4") ~ 2.6A (19")
Dimensions (WxLxH)	120 x 90 x 14.2 mm
Operating Temperature	-10~70 °C (14~158 °F)
Storage Temperature	-20~80 °C (-4~194 °F)
Relative Humidity	10~90% @ 40 °C Non-condensing
Plug-n-Play	VESA DDC1 / DDC2B

## Dimensions





## Ordering Information

<b>ADB-200</b>	VGA only TFT LCD Driving board (Scaler is Novatek)
<b>ADB-210</b>	VGA only TFT LCD Driving board (Scaler is Realtek)

